



MICROPOSIT™ LOL™ 1000 AND 2000 LIFTOFF LAYERS

For Microlithography Applications

Regional Product Availability

- North America
- Europe, Middle East and Africa
- Latin America
- Asia-Pacific

Description

MICROPOSIT LOL 1000/2000 Liftoff Layer is an enhanced dissolution rate, dyed PMGI (polymethylglutarimide) solution used for lift-off processes requiring tight CD control, such as GMR thin film head, gallium arsenide, and other leading-edge semiconductor applications. The LOL bilayer lift-off process is suitable for applications where a thin layer of metal is sputtered or evaporated in an additive process. CD variation due to etch bias inherent in subtractive processes is eliminated, resulting in superior metal line width control. Attack on the substrate by an etchant is eliminated.

Advantages

- Submicron lift-off capability
- Dissolution rate optimized for controlled undercut
- Excellent adhesion to thin film head and semiconductor substrates
- Developed to work with DUV, and 193 nm photoresists
- Compatible with g-, h-, and i-Line and 193 nm photoresists
- Compatible with TMAH and metal-ion-containing developers
- Residue-free removal using standard MICROPOSIT Remover 1165
- Simplified process—no DUV flood exposure, silylation or chlorobenzene required
- Excellent batch-to-batch consistency

Table 1. Suggested EBR Solvents

Cyclopentanone
Ethyl Lactate

Table 2. Suggested Line Solvents

Cyclopentanone
Ethyl Lactate

Figure 1. LOL 1000 on Si at 200°C/5 min. with 0.5 micron SPR™ 950

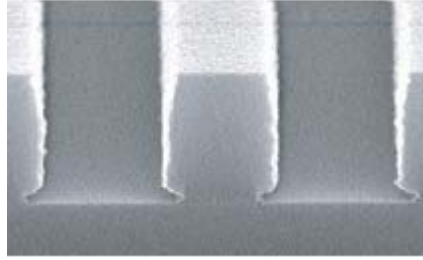


Figure 2. LOL 2000 on Si at 200°C/5 min. with 5.0 micron SPR 950



Substrate Preparation

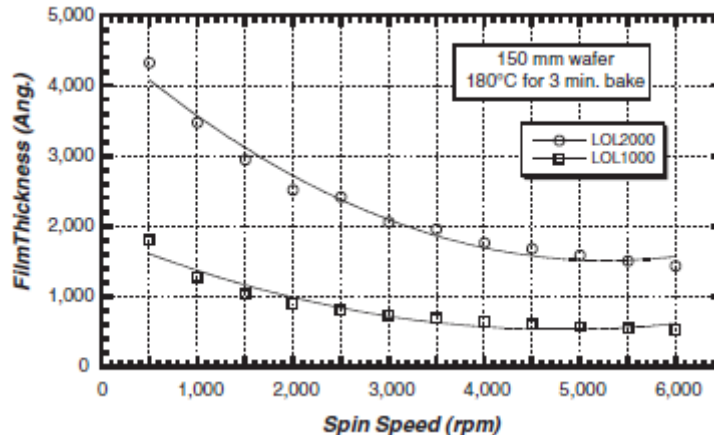
LOL lift-off layers provide excellent adhesion over a variety of substrates, including titanium, nickel-iron, tantalum, copper, silicon and silicon nitride. Surfaces should be clean and dry before application of LOL. If increased adhesion is required, a dehydration bake of 125°C for 30–60 minutes can be used. Use of an HMDS prime is not required for most substrates. For silicon, the optimum contact angle for maximum adhesion is 35°.

Coat (LOL)

LOL provides uniform defect-free coating over a thickness range of 500–1,200Å. The film thickness versus spin speed plot displayed in *Figure 3* provides the information required to meet process-dependent thickness specifications. For optimal lift-off, an LOL film thickness greater than the sputtered metal coating thickness is recommended.

LOL can be dispensed with low viscosity resist pumping systems (1–3 cSt) or nitrogen pressure dispense systems. Pumping and coating systems should be compatible with cyclopentanone. A dedicated spin bowl and drain should be used for LOL products. When photoresist is mixed with LOL, a very viscous film is formed that can cause the drain line to clog.

Figure 3. Spin Speed vs. Thickness



Edge Bead Removal (LOL)

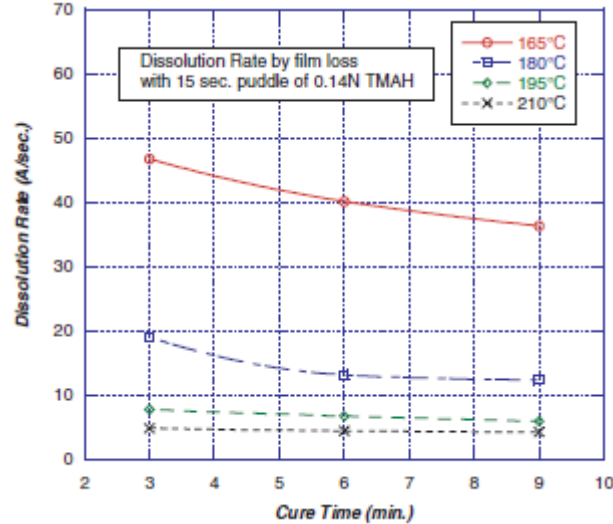
MICROPOSIT EC Solvent 11 is recommended for removing LOL build-up occurring at the edge of the wafer during spin coating. EC Solvent 11 is free of EGMEA, as well as acetone and xylene. EC Solvent 11 can be used with coating equipment designed to include an edge bead removal process.

Cure (LOL)

A key feature of LOL is the ability to optimize the desired undercut by adjusting the dissolution rate through softbake.

Figure 4 shows how bake time and temperature affect dissolution rate to control undercut profile. Either hotplate or convection ovens can be used for softbake process steps. Again, selection of optimal bake time and temperature is based on the specific application requirements for undercut and top imaging resist selection.

Figure 4. Dissolution Rate



LOL 1000 Thickness	550–1,850Å
LOL 2000 Thickness	1,850–4,250Å
LOL Cure	140–225°C/1 to 10 min.

Film Thickness Measurement (LOL)

The n and k values at 193 nm, 248 nm and 365 nm are shown in Table 4. Cauchy coefficients for LOL products are shown in Table 5. This information is required for measurement tools calculating film thickness. For tools not requiring Cauchy coefficients, use the refractive indices listed in Table 4.

	436 nm		365 nm		248 nm		193 nm	
	n	k	n	k	n	k	n	k
140°C	1.616	0.088	1.542	0.078	1.669	0.041	1.570	0.175
150°C	1.610	0.082	1.546	0.067	1.674	0.037	1.567	0.168
160°C	1.600	0.068	1.550	0.047	1.679	0.035	1.582	0.152
170°C	1.585	0.055	1.553	0.031	1.680	0.031	1.579	0.144
180°C	1.569	0.037	1.557	0.016	1.676	0.026	1.572	0.135
190°C	1.559	0.016	1.563	0.007	1.669	0.021	1.563	0.125
200°C	1.553	0.002	1.565	0.004	1.663	0.018	1.552	0.120
210°C	1.553	0.002	1.566	0.003	1.663	0.018	1.548	0.12

Table 5. Cauchy Coefficients (all bakes for 3 min.)			
Temperature	n1	n2	n3
140°C	1.568	-9.7E+04	6.3E+13
150°C	1.566	-7.7E+05	5.7E+13
160°C	1.559	-5.1E+04	3.7E+13
170°C	1.552	1.8E+05	2.8E+13
180°C	1.542	3.1E+05	1.9E+13
190°C	1.529	5.7E+05	5.5E+12
200°C	1.521	5.1E+05	2.5E+12
210°C	1.521	5.2E+05	2.3E+12

Expose (Image Layer)

A key feature of LOL products is that exposure is not required to enhance dissolution, thus eliminating a process step in production. It is the softbake parameters that are primarily used to control the dissolution rate of LOL. However, exposure and profile of the image layer does affect level of undercut by speeding the development of the imaging resist, allowing more time for the developer solution to be in contact with the LOL layer.

Post-Exposure Bake (Imaging Layer)

Although PEB is not needed for LOL, PEBs may be used for optimization of top imaging layers. See image layer data sheet for PEB recommendations.

Develop

LOL products are compatible with both TMAH, metal ion free (MIF), and metal ion bearing (MIB) developers. The lift-off undercut is produced by the difference in dissolution rate between the top imaging resist and the LOL for a given developer. The choice of optimum developer parameters depends on individual process requirements and equipment used.

Evaporate/Sputter Metal

LOL products are compatible with processing conditions used to sputter metal in standard PVD tools. Step coverage achieved from a specific metal deposition system will affect final liftoff strip times and deposited metal pattern.

Strip (Deposition Liftoff Step)

Remover 1165 is recommended for use in stripping LOL products, top coat photoresist, and excess deposited metal. For removing metallized liftoff layers, use Remover 1165 at 50°C/60 min. for first tank and 30 min. for second tank.

Handling Precautions

Before using this product, associated generic chemicals or the analytical reagents required for its control, consult the supplier's Material Safety Data Sheet (MSDS)/Safety Data Sheet (SDS) for details on material hazards, recommended handling precautions and product storage.

CAUTION! Keep combustible and/or flammable products and their vapors away from heat, sparks, flames and other sources of ignition including static discharge. Processing or operating at temperatures near or above product flashpoint may pose a fire hazard. Use appropriate grounding and bonding techniques to manage static discharge hazards.

CAUTION! Failure to maintain proper volume level when using immersion heaters can expose tank and solution to excessive heat resulting in a possible combustion hazard, particularly when plastic tanks are used.

Storage

Store products in tightly closed original containers at temperatures recommended on the product label.

Disposal Considerations

Dispose in accordance with all local, state (provincial) and federal regulations. Empty containers may contain hazardous residues. This material and its container must be disposed in a safe and legal manner.

It is the user's responsibility to verify that treatment and disposal procedures comply with local, state (provincial) and federal regulations. Contact your Dow Electronic Materials Technical Representative for more information.

Product Stewardship

Dow has a fundamental concern for all who make, distribute, and use its products, and for the environment in which we live. This concern is the basis for our product stewardship philosophy by which we assess the safety, health, and environmental information on our products and then take appropriate steps to protect employee and public health and our environment. The success of our product stewardship program rests with each and every individual involved with Dow products - from the initial concept and research, to manufacture, use, sale, disposal, and recycle of each product.

Customer Notice

Dow strongly encourages its customers to review both their manufacturing processes and their applications of Dow products from the standpoint of human health and environmental quality to ensure that Dow products are not used in ways for which they are not intended or tested. Dow personnel are available to answer your questions and to provide reasonable technical support. Dow product literature, including safety data sheets, should be consulted prior to use of Dow products. Current safety data sheets are available from Dow.

For Industrial Use Only. This information is based on our experience and is, to the best of our knowledge, true and accurate. However, since conditions for use and handling of products are beyond our control, we make no guarantee or warranty, expressed or implied, regarding the information, the use, handling, storage or possession of the products, or the applications of any process described herein or the results sought to be obtained. Nothing herein shall be construed as a recommendation to use any product in violation of any patent rights.

Contact:
North America: 1-800-832-6200
Taiwan: 886-37-539100
China: (+86) 21-3851-1000
Hong Kong: (+852) 2879-7333
Korea: (+82) 2-3490-0700
Japan: (+81) 3-5460-2200
Europe: (+41)(0)44-728-2111
www.dowelectronicmaterials.com

NOTICE: No freedom from infringement of any patent owned by Dow or others is to be inferred. Because use conditions and applicable laws may differ from one location to another and may change with time, Customer is responsible for determining whether products and the information in this document are appropriate for Customer's use and for ensuring that Customer's workplace and disposal practices are in compliance with applicable laws and other government enactments. The product shown in this literature may not be available for sale and/or available in all geographies where Dow is represented. The claims made may not have been approved for use in all countries. Dow assumes no obligation or liability for the information in this document. References to "Dow" or the "Company" mean the Dow legal entity selling the products to Customer unless otherwise expressly noted. **NO WARRANTIES ARE GIVEN; ALL IMPLIED WARRANTIES OF MERCHANTABILITY OR FITNESS FOR A PARTICULAR PURPOSE ARE EXPRESSLY EXCLUDED.**



UNRESTRICTED – May be shared with anyone

™ Trademark of The Dow Chemical Company ("Dow") or an affiliated company of Dow
MICROPOSIT™ LOL™ 1000 AND 2000 LIFTOFF LAYERS / Semiconductor Technologies

Form No. 889-00025, Rev. 0
March 2014